

GlobeTheoLib

GlobeTheoLib
Submissions to GlobeTheoLib

Global Digital Library on Theology and Ecumenism
 ForATL, Siliman University/Philippines, 13 April 2012

Prof. Dr. Christoph Stückelberger, Executive Director and
 Founder of Globethics.net stueckelberger@globethics.net

12.04.2012

GlobeTheoLib

Submission strategy - principles:

- Priority goes to **open access**, electronic content
- Seek **large databases** as priority because they add large amount of content
- Language: Portal is **multilingual**, content can be in any language
- Copyright: Priority is given to content published under an **open license** or where copyright is **easy available** (e.g. copyright is with the author or theological seminary which submits).

12.04.2012 2

GlobeTheoLib

Content acquisition for GlobeTheoLib:

1. Harvest material from OAI (Open Archives Initiative) repositories
2. Incorporate material from electronic databases through electronic 'bridge' via XML
3. **Manual** submission of documents (by individuals or institutions)

Who? 1 and 2 are done centralised by GlobeTheoLib Geneva, ForATL members are invited to make proposals e.g. for harvesting keywords and journals. 3 done by GlobeTheoLib and individuals

Important: In all cases content can be allocated to special (thematic or institutional) collections, or as specific journal content.
Copyright of documents is always respected.

12.04.2012 3

GlobeTheoLib

Submission strategy for GlobeTheoLib:

1. ForATL/GlobeTheoLib identify content priorities for Asia
2. In conjunction with ForATL member institutions identify content already available in electronic form (online or otherwise)
3. Identify appropriate forms of acquiring content (OAI repositories, electronic bridge, manual submissions)
4. Identify priorities for scanning projects

12.04.2012 4

GlobeTheoLib

Submissions to GlobeTheoLib

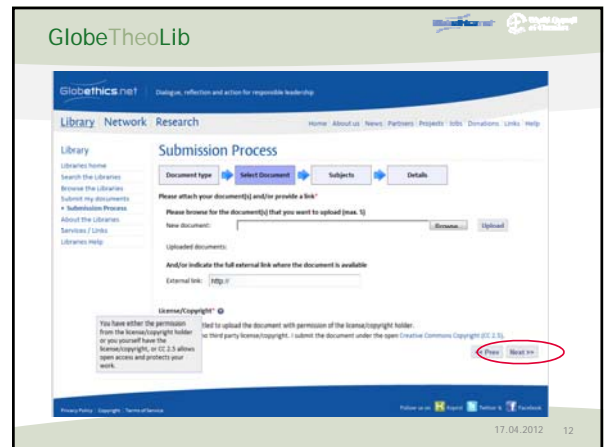
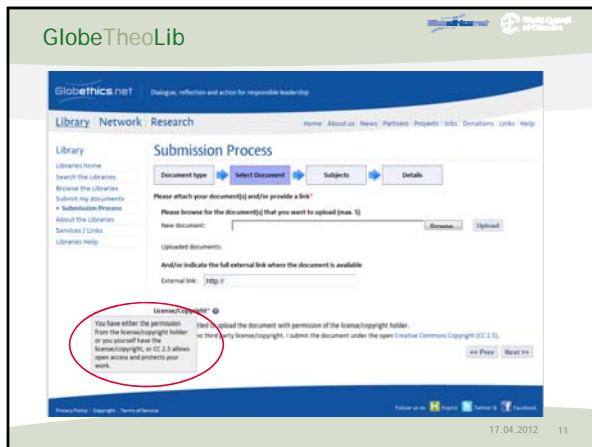
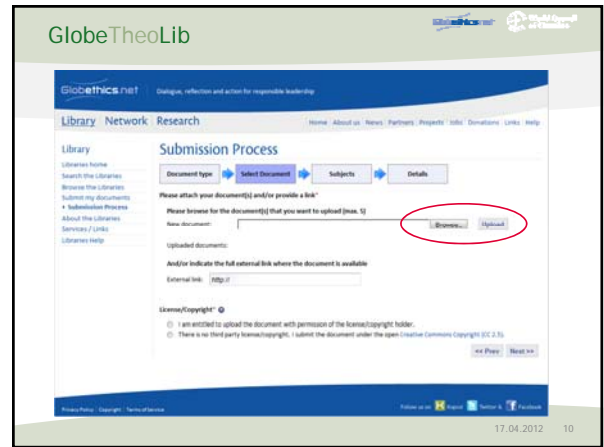
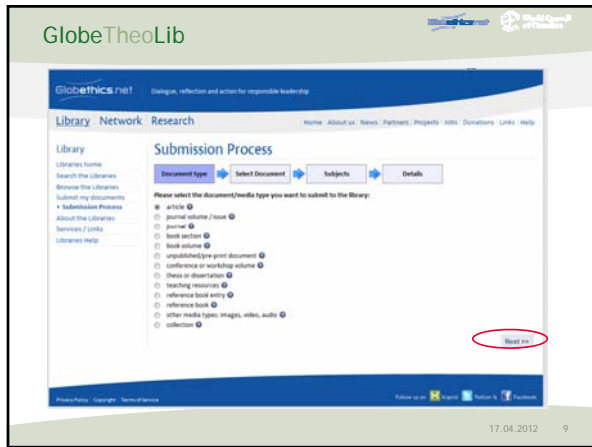
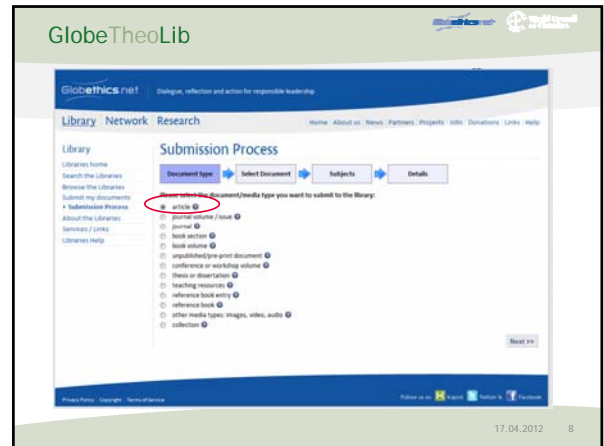
12.04.2012 5

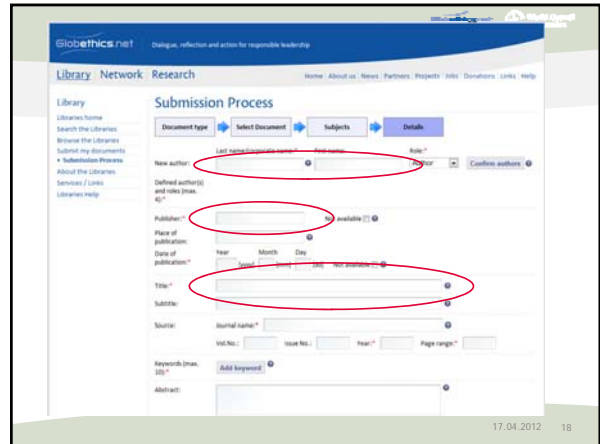
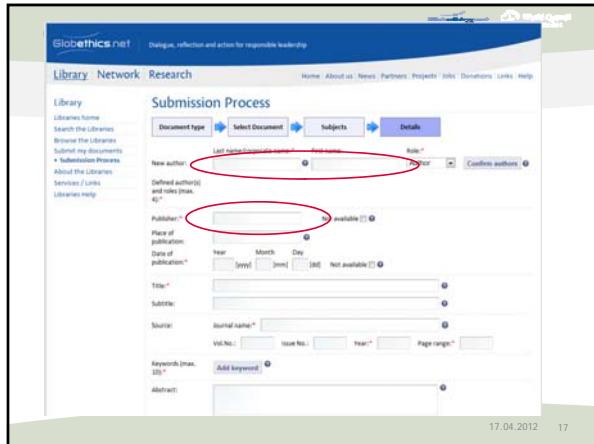
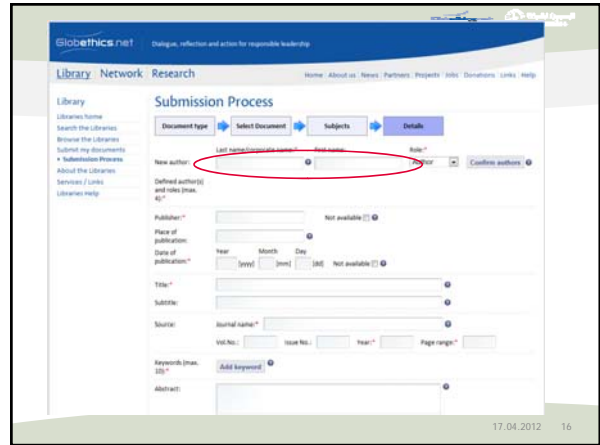
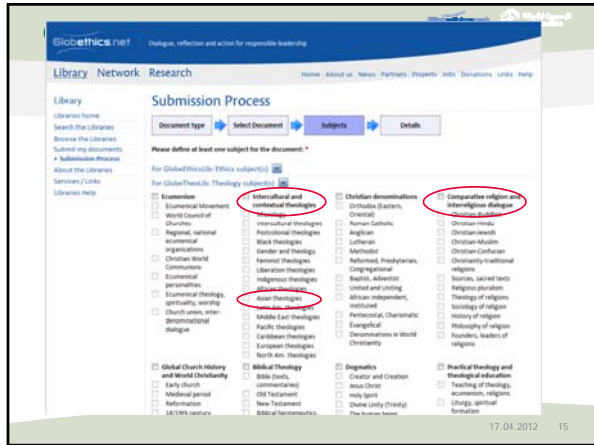
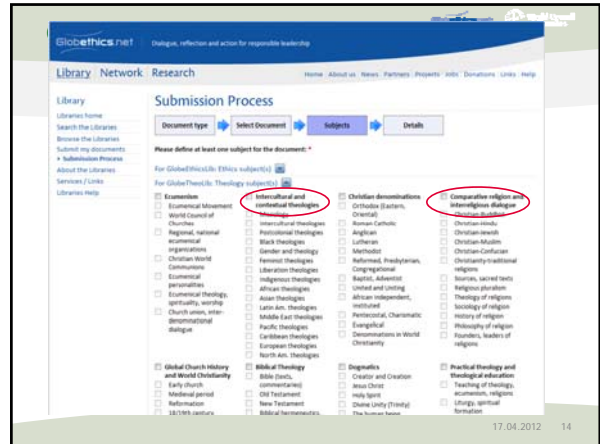
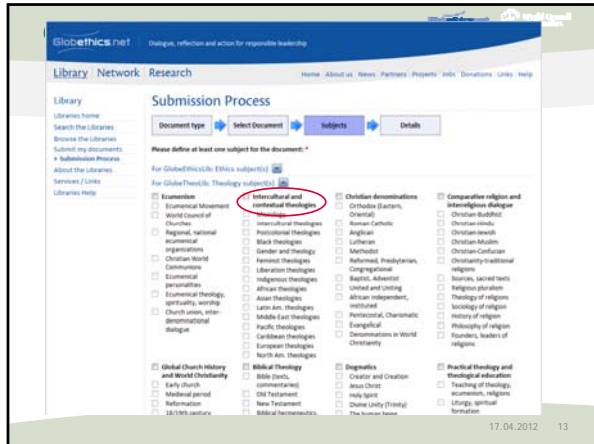
GlobeTheoLib

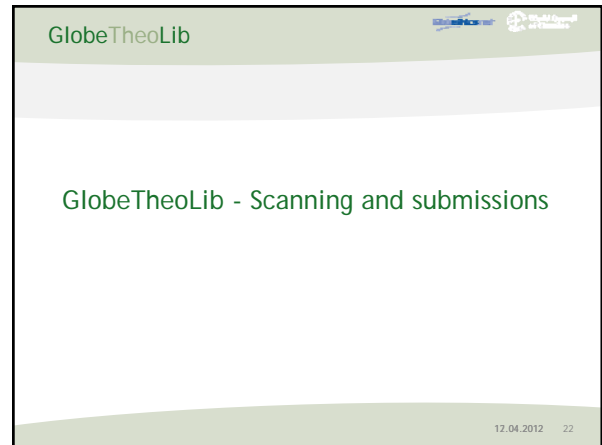
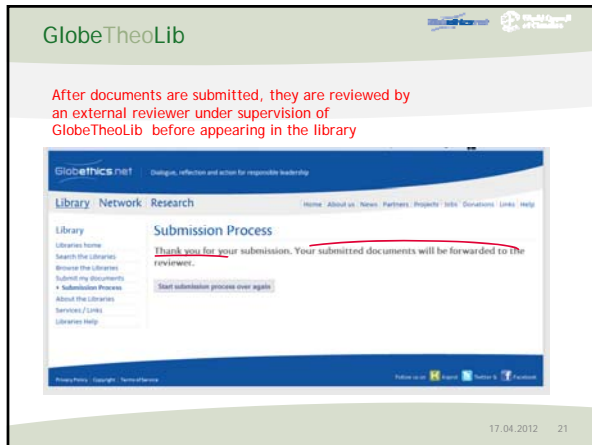
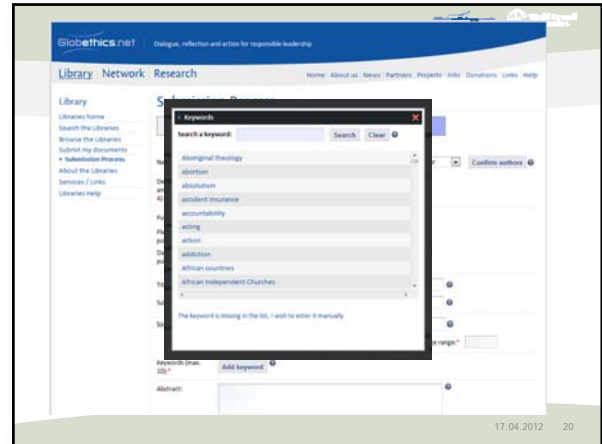
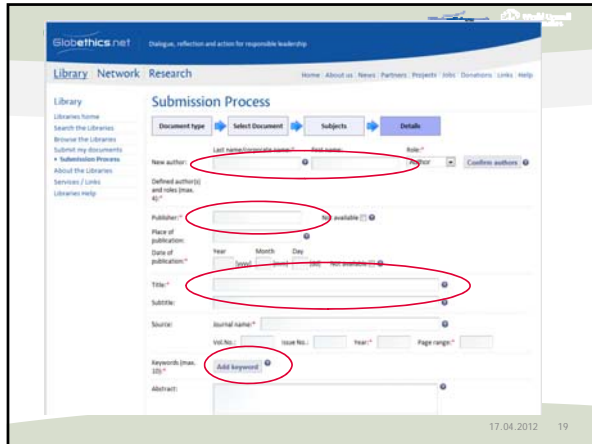
All registered participants can submit documents to GlobeTheoLib using the online submission process of Globethics.net

The screenshot shows the website interface with a navigation menu containing 'Library', 'Network', and 'Research'. The 'Submit your documents' link is highlighted with a red circle. The main content area includes a 'Submit your documents' section with a list of document types such as research articles, journals, theses, and monographs.

12.04.2012 6







GlobeTheoLib

Scanning Strategy:

- Before embarking on scanning, identify sources of material already in electronic form. Is much cheaper and faster than scanning projects!
- ForATL/GlobeTheoLib to **identify priorities** (thematic/institutional) for scanning in the Asia region
- Priority goes to identifying **regional, or sub-regional hubs** to coordinate scanning
- Priority goes to **collections of documents or books** rather than single items
- Priority goes to **institutional collections** where institutions have granted **copyright permission**, or material is **free of copyright restrictions**

12.04.2012 23

GlobeTheoLib

Scanning Principles:

- Output of scanning should be **low-size searchable PDF**
- Scanned documents should have **standardized metadata**
- Scanned documents can be made available through:
 - **OAI repository** (GlobeTheoLib can harvest scanned documents)
 - **Institutional database** (GlobeTheoLib can create electronic bridge via XML)
 - **Manual submissions** (Need agreement on submitters)

12.04.2012 24

terima kasi danke
thank you Asante sana
merci 謝謝 adube
oshe gracias
 धन्यवाद (Danyavad)
 grazie